

## BLACKTHORNE COURT, DORMERS WELL LANE



£299,950

Bright & spacious apartment set on the third floor of this most convenient and desirable purpose-built block and just 10 minutes walk from Southall Town Centre's many amenities. The property boasts a bright and spacious, superbly-presented interior that now features 2 double bedrooms, a generous living/dining room and a stylish fitted kitchen. Other benefits include the modern bathroom, as well as the well maintained communal grounds and off street parking. It is now vacant and therefore, offered for sale with no onward chain and simply must be seen to be fully appreciated!



# TUFFIN & WREN

*Independent Estate Agents*



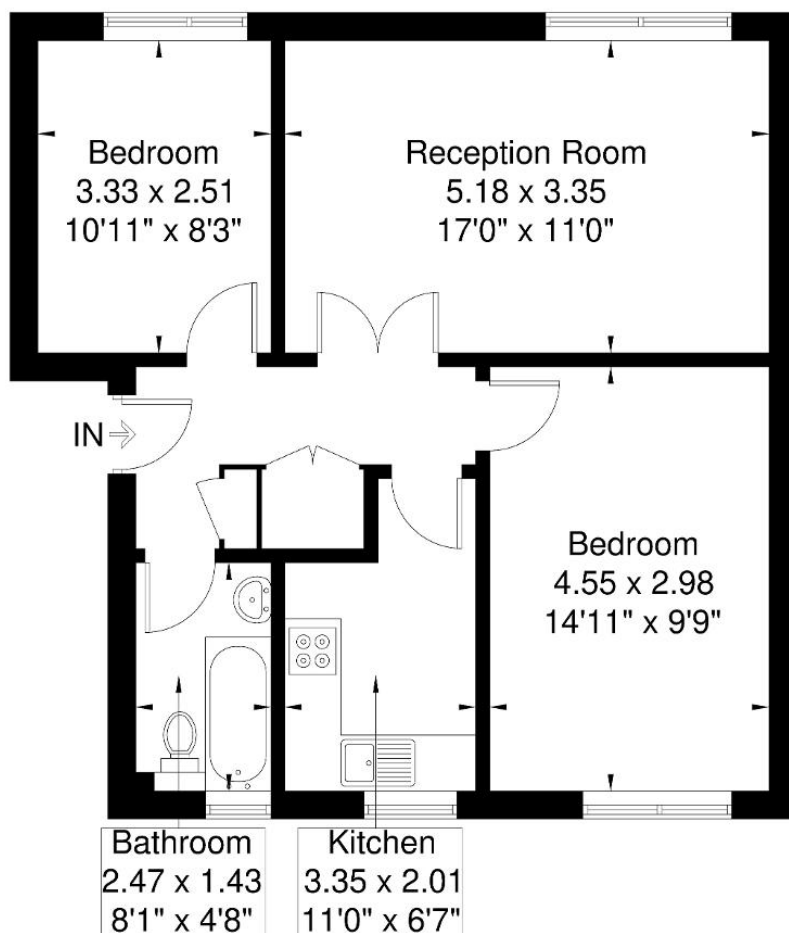
## Further Information

For more details please call us on **020 8840 0993** or send an email to [homes@tuffin-wren.co.uk](mailto:homes@tuffin-wren.co.uk).

Please note it is not our company policy to test services, heating systems and domestic appliances, therefore we cannot verify that they are in working order. Prospective purchasers are advised to obtain verification from their solicitors and/or surveyors.

## Blackthorne Court

Approximate Gross Internal Area = 58.3 sq m / 627 sq ft



### Third Floor

Although every attempt has been made to ensure accuracy, all measurements are approximate.  
The floorplan is for illustrative purposes only and not to scale.  
© www.perspective.co.uk

Score	Energy rating	Current	Potential
92+	<b>A</b>		
81-91	<b>B</b>		
69-80	<b>C</b>		<b>72 C</b>
55-68	<b>D</b>	<b>65 D</b>	
39-54	<b>E</b>		
21-38	<b>F</b>		
1-20	<b>G</b>		