

BERESFORD AVENUE, HANWELL



£599,950

Tuffin & Wren are delighted to offer for sale this appealing semi-detached family home situated on the southern side of a popular road in 'Elthorne Heights'. Boasting bright & spacious living accommodation over its 2 floors with 3 good sized bedrooms, large open-plan reception rooms and kitchen, a first floor fully-tiled shower room. Other benefits include the large and sunny southerly facing rear garden and no onward chain.

TUFFIN & WREN

Independent Estate Agents

Front Reception Room



Open-Plan Living/Dining/Kitchen Spaces



Kitchen Area



Bedroom 2



Wonderful, Southerly Facing Garden



Further Information

For more details please call us on **020 8840 0993** or send an email to homes@tuffin-wren.co.uk.

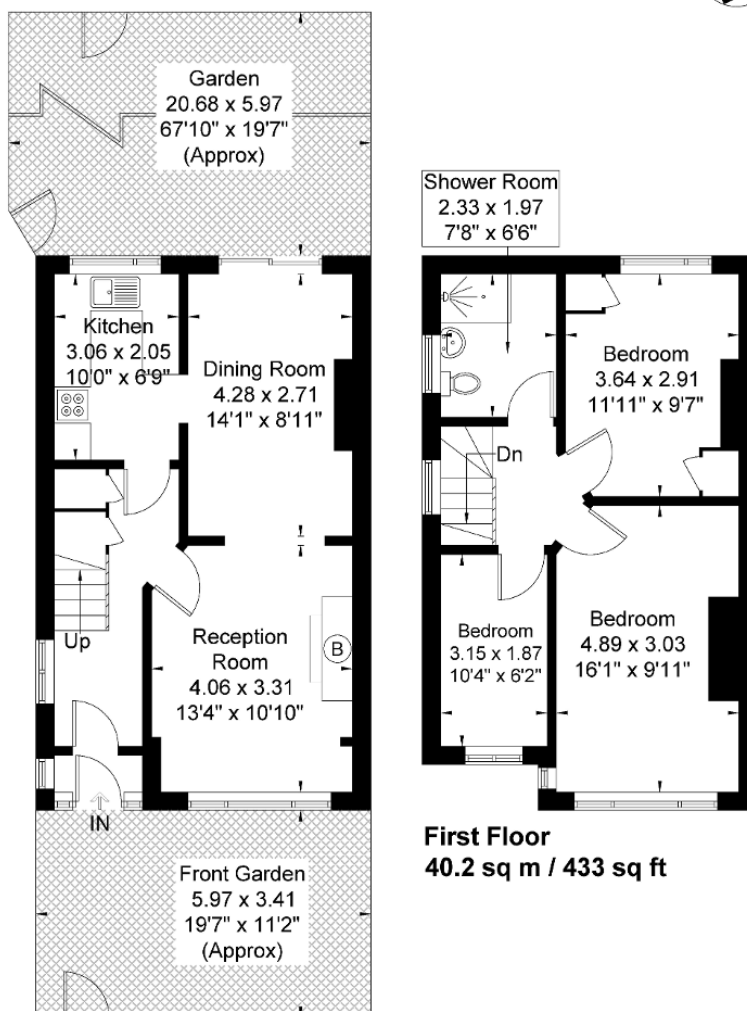
Please note it is not our company policy to test services, heating systems and domestic appliances, therefore we cannot verify that they are in working order. Prospective purchasers are advised to obtain verification from their solicitors and/or surveyors.

TUFFIN & WREN

Independent Estate Agents

Beresford Avenue

Approximate Gross Internal Area = 81.8 sq m / 880 sq ft



Ground Floor

41.6 sq m / 448 sq ft

Although every attempt has been made to ensure accuracy, all measurements are approximate.
The floorplan is for illustrative purposes only and not to scale.
© www.perspective.co.uk

Energy Efficiency Rating			
Score	Energy rating	Current	Potential
92+	A		
81-91	B		88 B
69-80	C		
55-68	D		
39-54	E	46 E	
21-38	F		
1-20	G		