

## MAYFIELD GARDENS, HANWELL



£750,000

Tuffin & Wren are privileged to offer for sale this beautifully presented, semi-detached family home situated in an enviable position set back from this popular and convenient tree-lined road. Expertly remodelled and refurbished by the present owners, the property now boasts light-filled, contemporary styled living accommodation that features; 3 bedrooms, separate reception room and a wonderful, open-plan kitchen/dining space with a superb integrated kitchen area. Other benefits include the luxurious family bathroom, a handy downstairs cloakroom WC and the wonderful 100"+ southerly facing landscaped rear garden, complete with vegetable & herb garden!



# TUFFIN & WREN

*Independent Estate Agents*

**Front Reception Room**



**Superb Dining Room**



**Stylish Integrated Kitchen Area**



**Wonderful 100" Southerly Facing Garden**



**Garden, Patio & Rear Elevations**



## Further Information

For more details please call us on **020 8840 0993** or send an email to [homes@tuffin-wren.co.uk](mailto:homes@tuffin-wren.co.uk).

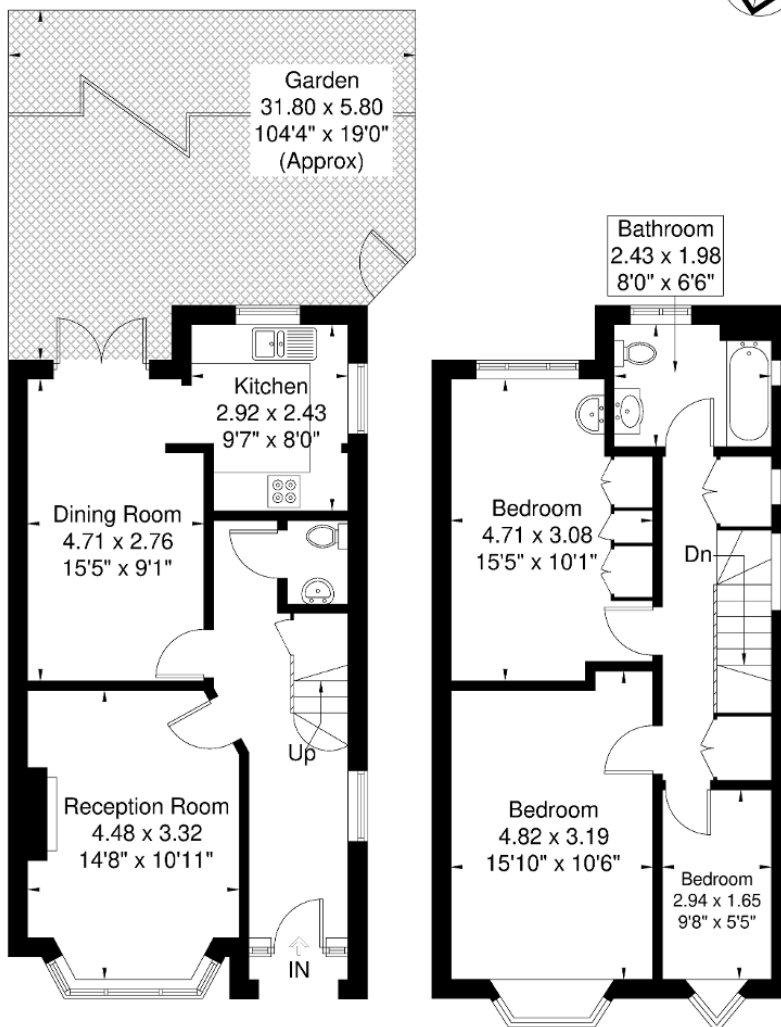
Please note it is not our company policy to test services, heating systems and domestic appliances, therefore we cannot verify that they are in working order. Prospective purchasers are advised to obtain verification from their solicitors and/or surveyors.

# TUFFIN & WREN

Independent Estate Agents

## Mayfield Gardens

Approximate Gross Internal Area = 97.0 sq m / 1044 sq ft



Although every attempt has been made to ensure accuracy, all measurements are approximate.  
The floorplan is for illustrative purposes only and not to scale.  
© www.perspective.co.uk

Energy Efficiency Rating			
Score	Energy rating	Current	Potential
92+	A		
81-91	B		85   B
69-80	C		
55-68	D	61   D	
39-54	E		
21-38	F		
1-20	G		