

SPRING COURT, CHURCH ROAD



£450,000

Bright and exceptionally spacious apartment, set on the ground floor of this enviably located purpose-built block. A delightful property that boasts generously proportioned, nicely-presented accommodation with quality fittings & finishes used throughout. Features now include; a very large reception room, 2 double bedrooms, a modern fitted kitchen and a superb bathroom. The property also benefits from an entryphone system, extensive grounds, communal gardens and off-street parking, not to mention the wonderful Southerly views across Brent Lodge Park and Churchfield Recreation Grounds - it simply must be seen to be fully appreciated....

TUFFIN & WREN

Independent Estate Agents

Huge Reception Room



Modern Fitted Kitchen



Double Bedroom



Double Bedroom



Extensive Communal Gardens



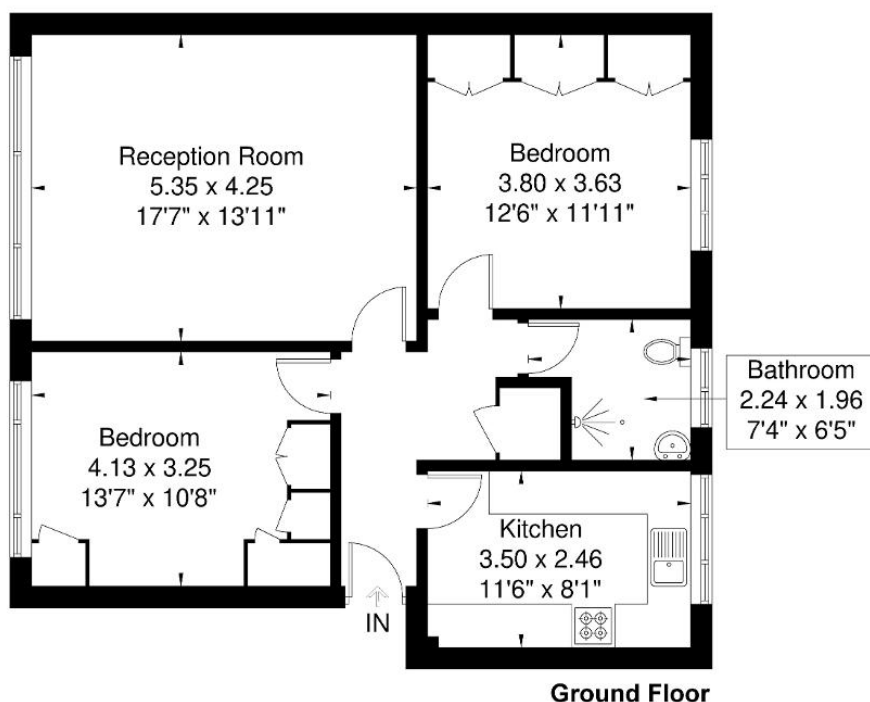
Further Information

For more details please call us on **020 8840 0993** or send an email to homes@tuffin-wren.co.uk.

Please note it is not our company policy to test services, heating systems and domestic appliances, therefore we cannot verify that they are in working order. Prospective purchasers are advised to obtain verification from their solicitors and/or surveyors.

Spring Court

Approximate Gross Internal Area = 73.1 sq m / 786 sq ft



Although every attempt has been made to ensure accuracy, all measurements are approximate.
The floorplan is for illustrative purposes only and not to scale.
© www.perspective.co.uk

Energy Efficiency Rating			
Score	Energy rating	Current	Potential
92+	A		
81-91	B		
69-80	C	72 C	78 C
55-68	D		
39-54	E		
21-38	F		
1-20	G		